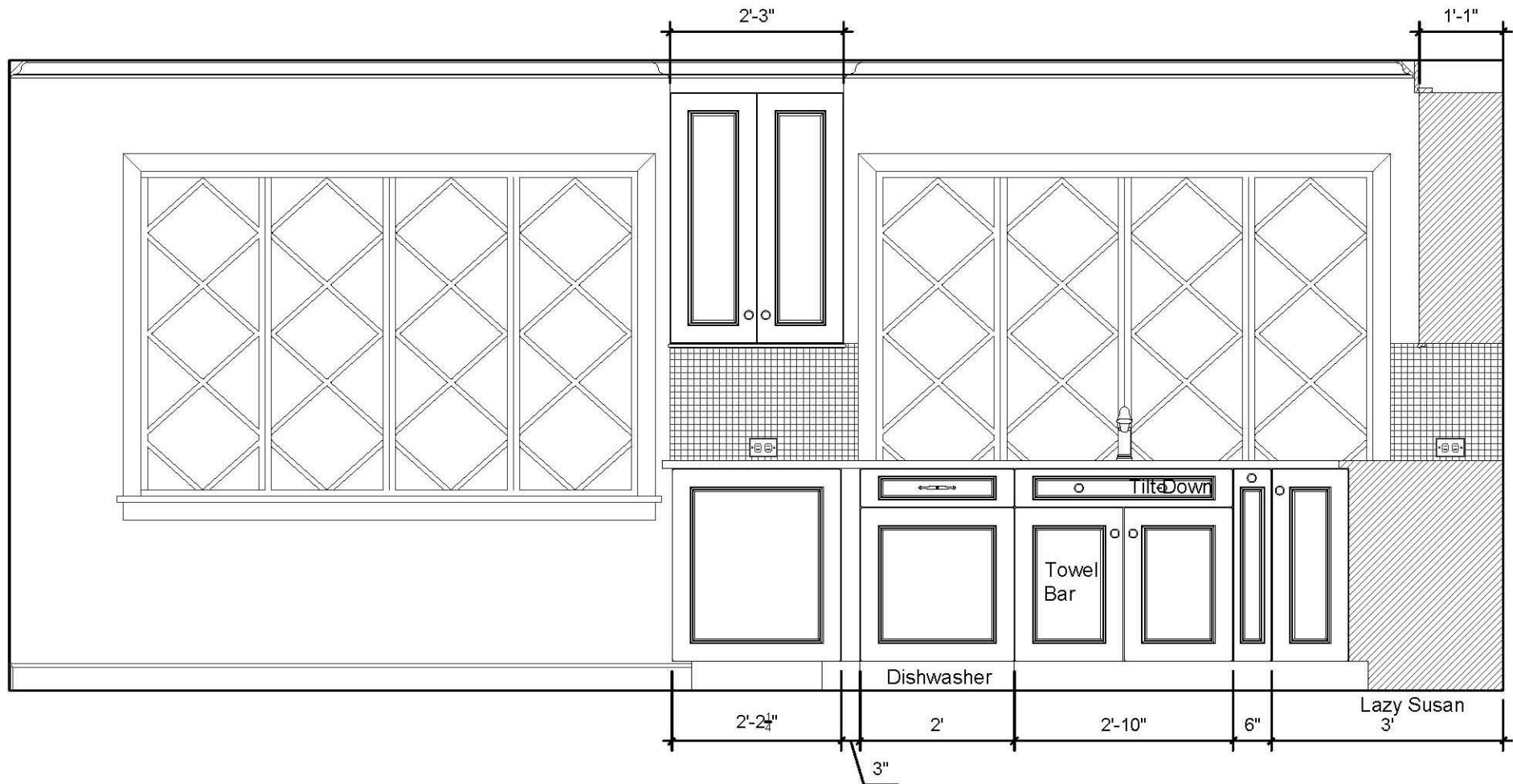


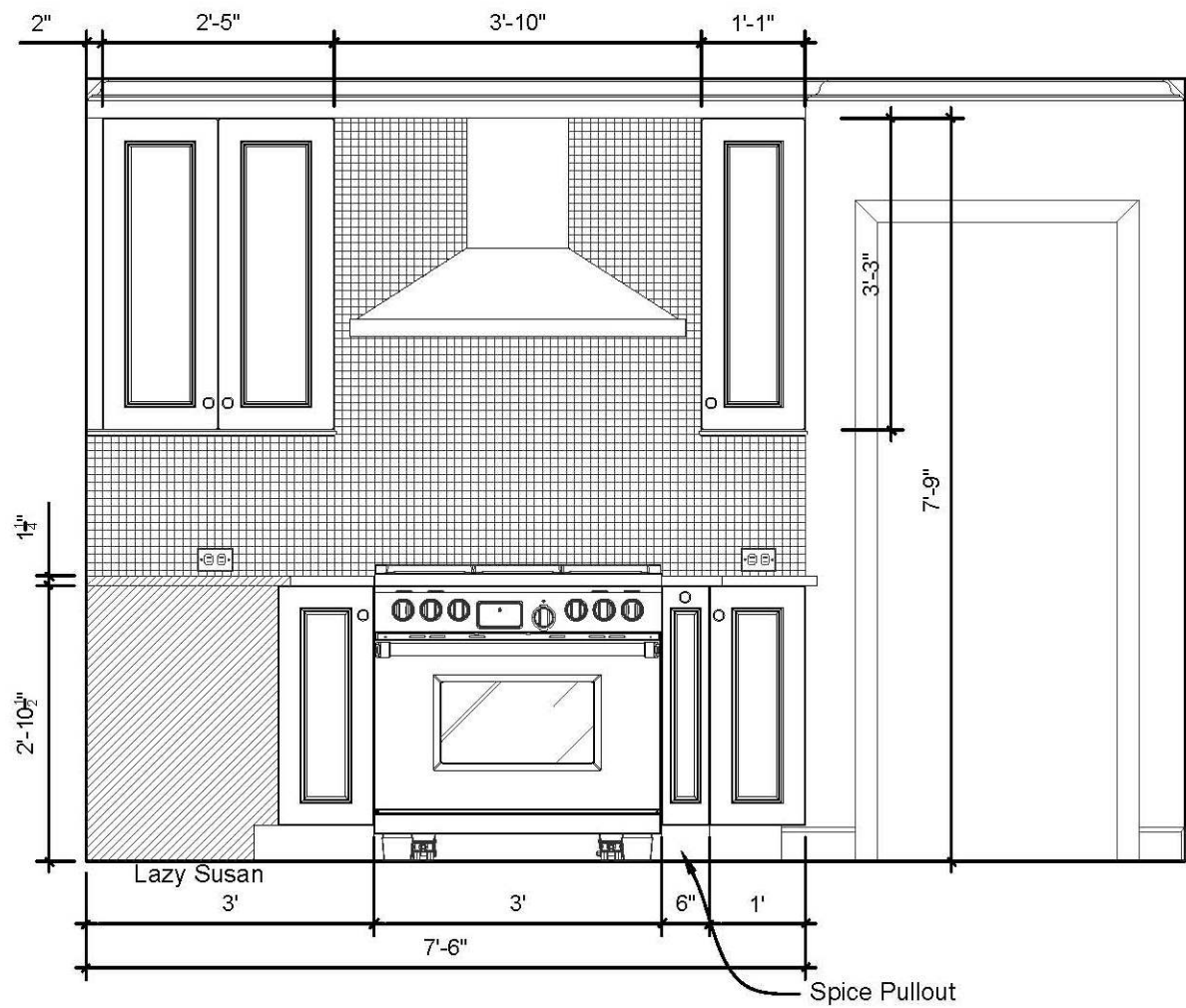
Kitchen Floor Plan

Scale: 1/2" = 1'-0"



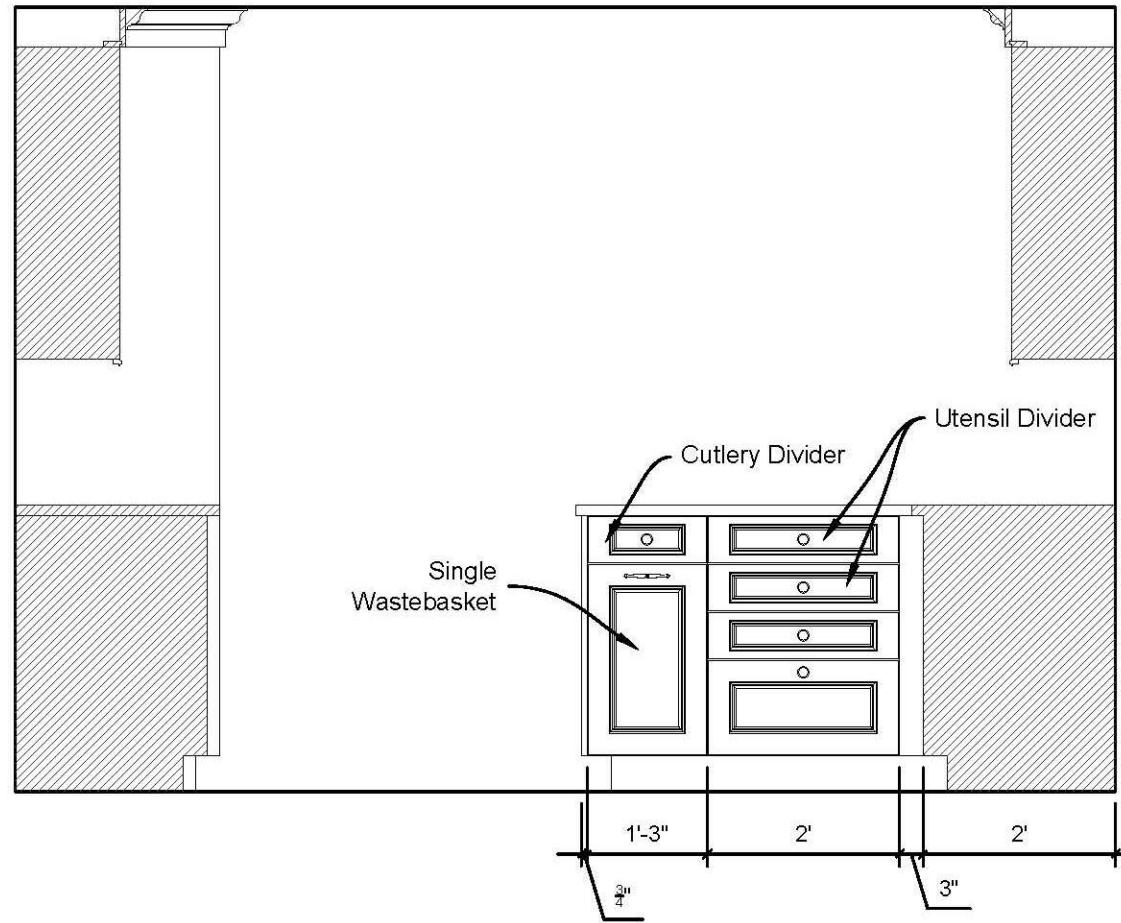
Kitchen Elevation

Scale: 1/2" = 1'-0"



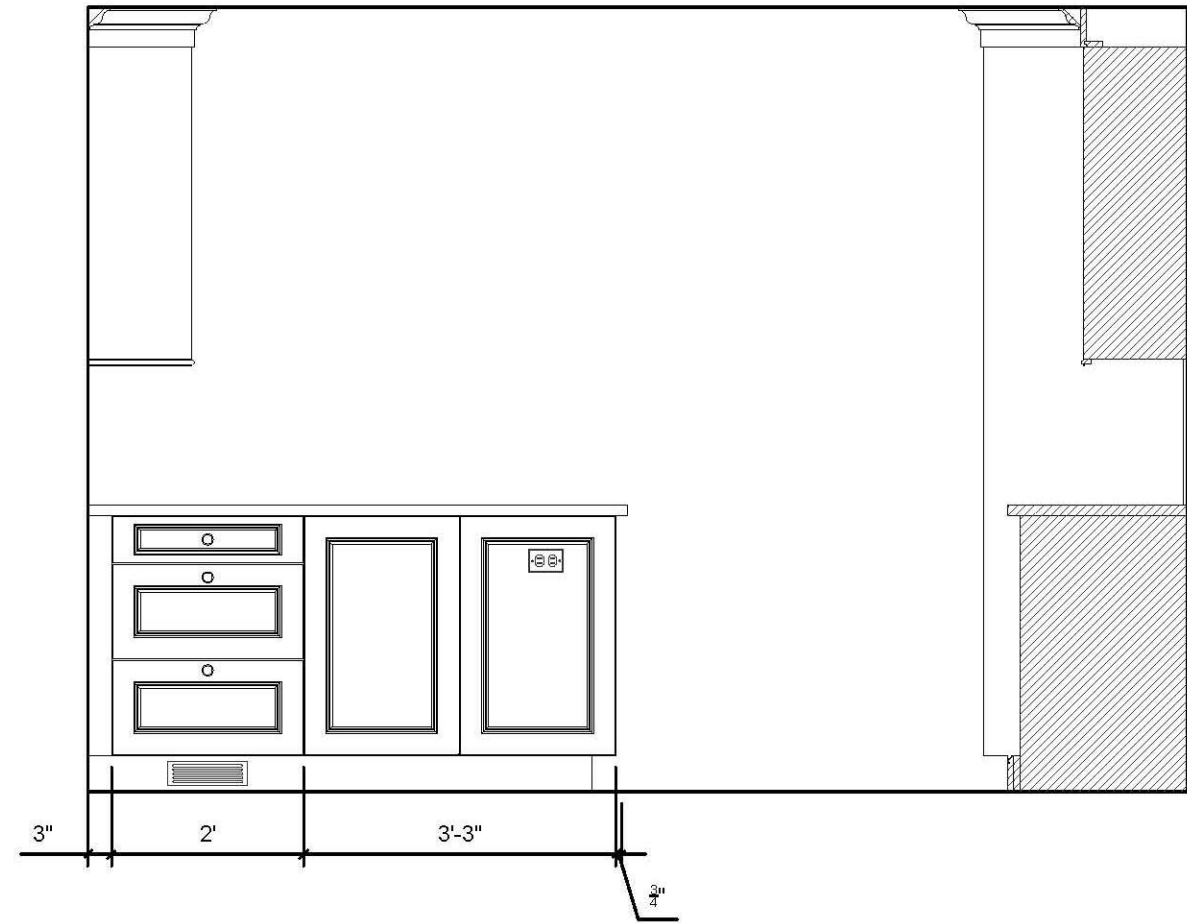
Kitchen Elevation 2

Scale: 1/2" = 1'-0"



Kitchen Elevation 4

Scale: 1/2" = 1'-0"



Kitchen Elevation 5

Scale: 1/2" = 1'-0"